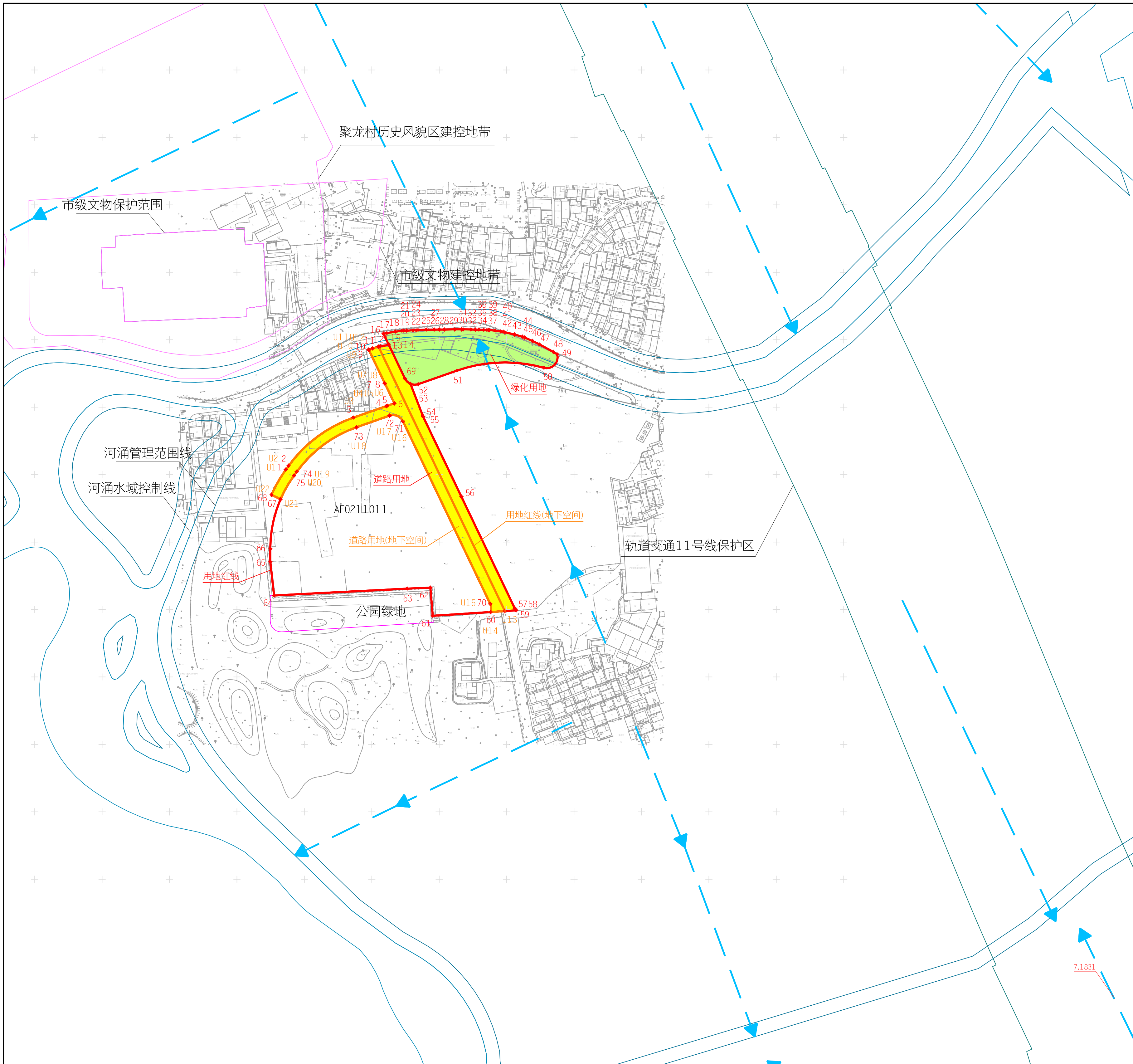


建设用地规划红线图



界桩坐标表					界桩坐标表				
地上桩点表 (共 75 个桩点)					地下桩点表 (共 22 个桩点)				
广州2000坐标系					广州2000坐标系				
序号	X坐标(米)	Y坐标(米)	序号	X坐标(米)	序号	X坐标(米)	Y坐标(米)	序号	X坐标(米)
1	224853.710	351.36.263	1	2554676.691	U1	224853.710	351.36.263	U1	2554676.691
2	224856.544	351.38.319	2	2554679.515	U2	224856.544	351.38.319	U2	2554679.515
3	224862.209	351.06.207	3	2554714.951	U3	224862.209	351.06.207	U3	2554714.951
4	224900.800	35210.729	4	2554723.424	U4	224900.800	35210.729	U4	2554723.424
5	224901.008	35211.367	5	2554723.629	U5	224901.008	35211.367	U5	2554723.629
6	224902.887	35216.728	6	2554725.482	U6	224902.887	35216.728	U6	2554725.482
7	224917.705	35209.643	7	2554740.335	U7	224917.705	35209.643	U7	2554740.335
8	224917.757	35209.618	8	2554740.387	U8	224917.757	35209.618	U8	2554740.387
9	224942.332	35197.867	9	2554765.021	U9	224942.332	35197.867	U9	2554765.021
10	224942.638	35197.721	10	2554765.327	U10	224942.638	35197.721	U10	2554765.327
11	224943.695	35200.619	11	2554766.371	U11	224943.695	35200.619	U11	2554766.371
12	224945.235	35206.301	12	2554767.883	U12	224945.235	35206.301	U12	2554767.883
13	224946.136	35212.675	13	2554768.754	U13	224946.136	35212.675	U13	2554768.754
14	224946.761	35212.376	14	2554769.379	U14	224946.761	35212.376	U14	2554769.379
15	224951.987	35209.877	15	2554774.619	U15	224951.987	35209.877	U15	2554774.619
16	224954.469	35209.691	16	2554777.106	U16	224954.469	35209.691	U16	2554777.106
17	224954.926	35211.122	17	2554777.551	U17	224954.926	35211.122	U17	2554777.551
18	224955.979	35217.430	18	2554778.574	U18	224955.979	35217.430	U18	2554778.574
19	224956.625	35222.315	19	2554779.197	U19	224956.625	35222.315	U19	2554779.197
20	224956.704	35223.730	20	2554779.269	U20	224956.704	35223.730	U20	2554779.269
21	224956.760	35225.833	21	2554779.315	U21	224956.760	35225.833	U21	2554779.315
22	224959.034	35230.662	22	2554779.566	U22	224959.034	35230.662	U22	2554779.566
23	224959.190	35232.871	23	2554779.670	U23	224959.190	35232.871	U23	2554779.670
24	224959.245	35234.271	24	2554779.759	U24	224959.245	35234.271	U24	2554779.759
25	224957.437	35240.373	25	2554779.921	U25	224957.437	35240.373	U25	2554779.921
26	224957.519	35246.263	26	2554779.975	U26	224957.519	35246.263	U26	2554779.975
27	224957.573	35250.078	27	2554780.011	U27	224957.573	35250.078	U27	2554780.011
28	224957.551	35253.803	28	2554779.971	U28	224957.551	35253.803	U28	2554779.971
29	224957.698	35261.488	29	2554780.081	U29	224957.698	35261.488	U29	2554780.081
30	224957.711	35265.609	30	2554780.088	U30	224957.711	35265.609	U30	2554780.088
31	224957.697	35267.731	31	2554780.089	U31	224957.697	35267.731	U31	2554780.089
32	224957.614	35273.530	32	2554779.938	U32	224957.614	35273.530	U32	2554779.938
33	224957.492	35276.840	33	2554779.801	U33	224957.492	35276.840	U33	2554779.801
34	224957.447	35279.441	34	2554779.743	U34	224957.447	35279.441	U34	2554779.743
35	224957.295	35283.012	35	2554779.573	U35	224957.295	35283.012	U35	2554779.573
36	224957.237	35285.342	36	2554779.504	U36	224957.237	35285.342	U36	2554779.504
37	224957.189	35286.536	37	2554779.450	U37	224957.189	35286.536	U37	2554779.450
38	224957.160	35287.197	38	2554779.418	U38	224957.160	35287.197	U38	2554779.418
39	224956.760	35291.456	39	2554778.998	U39	224956.760	35291.456	U39	2554778.998
40	224956.202	35295.090	40	2554778.419	U40	224956.202	35295.090	U40	2554778.419
41	224955.897	35297.466	41	2554778.106	U41	224955.897	35297.466	U41	2554778.106
42	224955.578	35298.670	42	2554777.780	U42	224955.578	35298.670	U42	2554777.780
43	224955.888	35305.830	43	2554776.056	U43	224955.888	35305.830	U43	2554776.056
44	224952.208	35311.694	44	2554774.347	U44	224952.208	35311.694	U44	2554774.347
45	224951.648	35313.383	45	2554773.780	U45	224951.648	35313.383	U45	2554773.780
46	224949.048	35319.241	46	2554771.151	U46	224949.048	35319.241	U46	2554771.151
47	224946.698	35324.147	47	2554768.777	U47	224946.698	35324.147	U47	2554768.777
48	224940.944	35346.682	48	2554762.972	U48	224940.944	35346.682	U48	2554762.972
49	224939.312	35353.454	49	2554761.306	U49	224939.312	35353.454	U49	2554761.306
50	224929.199	35327.671	50	2554751.259	U50	224929.199	35327.671	U50	2554751.259
51	224927.123	35263.184	51	2554749.495	U51	224927.123	35263.184	U51	2554749.495
52	224917.066	35234.477	52	2554739.576	U52	224917.066	35234.477	U52	2554739.576
53	224917.246	35228.721	53	2554739.784	U53	224917.246	35228.721	U53	2554739.784
54	224894.187	35237.621	54	2554716.681	U54	224894.187	35237.621	U54	2554716.681
55	224893.031	35238.068	55	2554715.522	U55	224893.031	35238.068	U55	2554715.522
56	224833.664	35266.455	56	2554656.015	U56	224833.664	35266.455	U56	2554656.015
57	224751.022	35265.971	57	2554651.776	U57	224751.022	35265.971	U57	2554651.776
58	224749.820	35306.980	58	2554651.911	U58	224749.820	35306.980	U58	2554651.911
59	224749.362	35307.034	59	2554651.511	U59	224749.362	35307.034	U59	2554651.511
60	224748.133	35298.182	60	2554703.373	U60	224748.133	35298.182	U60	2554703.373
61	224745.331	35245.201	61	2554667.778	U61	224745.331	35245.201	U61	2554667.778
62	224746.139	35243.435	62	2554588.596	U62	224746.139	35243.435	U62	2554588.596
63	224765.476	35226.244	63	2554588.016	U63	224765.476	35226.244	U63	2554588.016
64	224760.400	35127.527	64	2554583.416	U64	224760.400	35127.527	U64	2554583.416
65	224785.427	35124.714	65	2554608.459	U65	224785.427	35124.714	U65	2554608.459
66	224794.999	35124.714	66	2554618.031	U66	224794.999	35124.714	U66	2554618.031
67	224831.794	35132.347	67	2554694.732	U67	224831.794	35132.347	U67	2554694.732
68	224835.012	35125.568	68	2554698.043	U68	224835.012	35125.568	U68	2554698.043
69	224921.165	35224.615	69	2554743.723	U69	224921.165	35224.615	U69	2554743.723
70	224754.183	35287.833	70	2554676.425	U70	224754.183	35287.833	U70	2554676.425
71	224889.623	35223.071	71	2554712.186	U71	224889.623	35223.071	U71	2554712.186
72	224893.722	35213.209	72	2554716.333	U72	224893.722	35213.209	U72	2554716.333
73	224885.131	35188.686	73	2554707.860	U73	224885.131	35188.686	U73	2554707.860
74	224852.141	35144.390	74	2554675.082	U74	224852.141	35144.390	U74	2554675.082
75	224849.307	35142.335	75	2554672.258	U75	224849.307	35142.335	U75	2554672.258
地上面积表 (以广州2000坐标系数据计算)					地下面积表 (以广州2000坐标系数据计算)				
端点	中点	半径(米)	端点	中点	半径(米)	端点	中点	半径(米)	端点
X坐标(米)	Y坐标(米)		X坐标(米)	Y坐标(米)		X坐标(米)	Y坐标(米)		X坐标(米)
57.58	224750.406	35306.299	8.00	57.58	2554572.558	421.897.788	8.00	57.58	2554572.558
58.59	224749.588	35306.853	8.00	58.59	2554571.738	421.888.337	8.00	58.59	2554571.738
66.67	224813.788	35126.642	92.50	66.67	2554636.812	421.718.425	92.50	66.67	2554636.812
68.1	224844.650	35130.411	100.00	68.1	2554667.658	421.722.343	100.00	68.1	2554667.658
2.3	224878.034	35159.539	100.00	2.3	2554700.904	421.751.634	100.00	2.3	2554700.904
4.5	224900.907	35211.047	15.50	4.5	2554723.530	421.803.256	15.50	4.5	2554723.530
49.50	224931.341	35335.575	8.00	49.50	2554753.364	421.927.939	8.00	49.50	2554753.364
50.51	224933.113	35295.268	107.50	50.51	2554755.331	421.887.638	107.50	50.51	2554755.331
52.53	224916.620	35231.583	8.00	52.53	2554739.145	421.823.869	8.00	52.53	2554739.145
54.55	224893.001	35237.822	8.00	54.55	2554716.093	421.829.997	8.00	54.55	2554716.093
70.60	224751.192	35288.602	8.00	70.60	2554573.430	421.880.093	8.00	70.60	2554573.430
66.75	224823.546	35129.229	92.50	66.75	2554646.559	421.721.059	92.50	66.75	2554646.559
74.73	224872.019	35164.019	92.50	74.73	2554694.867	421.756.085	92.50	74.73	2554694.867
72.71	224893.559	35218.924	8.00	72.71	2554716.143	421.811.098	8.00	72.71	2554716.143
52.69	224917.229	35228.762	8.00	52.69	2554739.767	421.821.051	8.00	52.69	2554739.767
69.53	224918.829	35226.309	8.00	69.53	2554741.379	421.816.605	8.00	69.53	2554741.379
75.67	224840.823	35136.862	92.50	75.67	2554663.800	421.728.776	92.50	75.67	