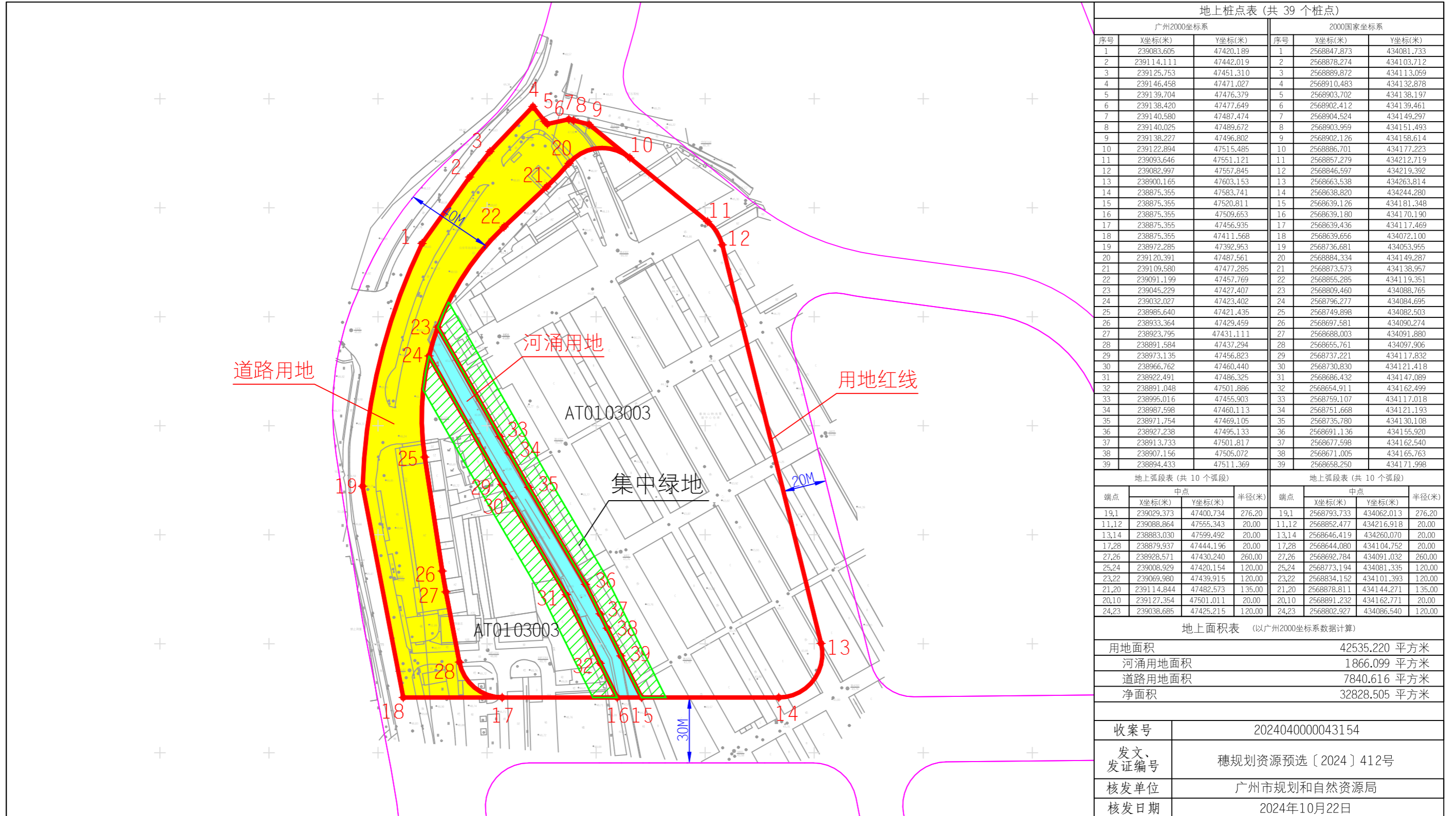


# 建设用地规划红线图



地上桩点表 (共 39 个桩点)					
广州2000坐标系			2000国家坐标系		
序号	X坐标(米)	Y坐标(米)	序号	Y坐标(米)	
1	239083.605	47420.189	1	2568847.873	434081.733
2	239114.111	47442.019	2	2568878.274	434103.712
3	239125.753	47451.310	3	2568889.872	434113.059
4	239146.458	47471.027	4	2568910.483	434132.878
5	239139.704	47476.379	5	2568903.702	434138.197
6	239138.420	47477.649	6	2568902.412	434139.461
7	239140.580	47487.474	7	2568904.524	434149.297
8	239140.025	47489.672	8	2568903.959	434151.493
9	239138.227	47496.802	9	2568902.126	434158.614
10	239122.894	47515.485	10	2568886.701	434177.223
11	239093.646	47551.121	11	2568857.279	434212.719
12	239082.997	47557.845	12	2568846.597	434219.392
13	238900.165	47603.153	13	2568663.538	434263.814
14	238875.355	47583.741	14	2568638.820	434244.280
15	238875.355	47520.811	15	2568639.126	434181.348
16	238875.355	47509.653	16	2568639.180	434170.190
17	238875.355	47456.935	17	2568639.436	434117.469
18	238875.355	47411.568	18	2568639.656	434072.100
19	238972.285	47392.953	19	2568736.681	434053.955
20	239120.391	47487.561	20	2568884.334	434149.287
21	239109.580	47477.285	21	2568873.573	434138.957
22	239091.199	47457.769	22	2568855.285	434119.351
23	239045.229	47427.407	23	2568809.460	434088.765
24	239032.027	47423.402	24	2568796.277	434084.695
25	238985.640	47421.435	25	2568749.898	434082.503
26	238933.364	47429.459	26	2568697.581	434090.274
27	238923.795	47431.111	27	2568688.003	434091.880
28	238891.584	47437.294	28	2568655.761	434097.906
29	238973.135	47456.823	29	2568737.221	434117.832
30	238966.762	47460.440	30	2568730.830	434121.418
31	238922.491	47486.325	31	2568686.432	434147.089
32	238891.048	47501.886	32	2568654.911	434162.499
33	238995.016	47455.903	33	2568759.107	434117.018
34	238987.598	47460.113	34	2568751.668	434121.193
35	238971.754	47469.105	35	2568735.780	434130.108
36	238927.238	47495.133	36	2568691.136	434155.920
37	238913.733	47501.817	37	2568677.598	434162.540
38	238907.156	47505.072	38	2568671.005	434165.763
39	238894.433	47511.369	39	2568658.250	434171.998

地上弧段表 (共 10 个弧段)				地上弧段表 (共 10 个弧段)			
端点	中点		半径(米)	端点	中点		半径(米)
	X坐标(米)	Y坐标(米)			X坐标(米)	Y坐标(米)	
19,1	239029.373	47400.734	276.20	19,1	2568793.733	434062.013	276.20
11,12	239088.864	47555.343	20.00	11,12	2568852.477	434216.918	20.00
13,14	238883.030	47599.492	20.00	13,14	2568646.419	434260.070	20.00
17,28	238879.937	47444.196	20.00	17,28	2568644.080	434104.752	20.00
27,26	238928.571	47430.240	260.00	27,26	2568692.784	434091.032	260.00
25,24	239008.929	47420.154	120.00	25,24	2568773.194	434081.335	120.00
23,22	239069.980	47439.915	120.00	23,22	2568834.152	434101.393	120.00
21,20	239114.844	47482.573	135.00	21,20	2568878.811	434144.271	135.00
20,10	239127.354	47501.011	20.00	20,10	2568891.232	434162.771	20.00
24,23	239038.685	47425.215	120.00	24,23	2568802.927	434086.540	120.00

地上面积表 (以广州2000坐标系数据计算)	
用地面积	42535.220 平方米
河涌用地面积	1866.099 平方米
道路用地面积	7840.616 平方米
净面积	32828.505 平方米

收案号	202404000043154
发文、发证编号	穗规划资源预选〔2024〕412号
核发单位	广州市规划和自然资源局
核发日期	2024年10月22日

附注：本图采用广州2000平面坐标系和高程系统；图中界桩坐标表之2000国家坐标系数据仅供参考使用。