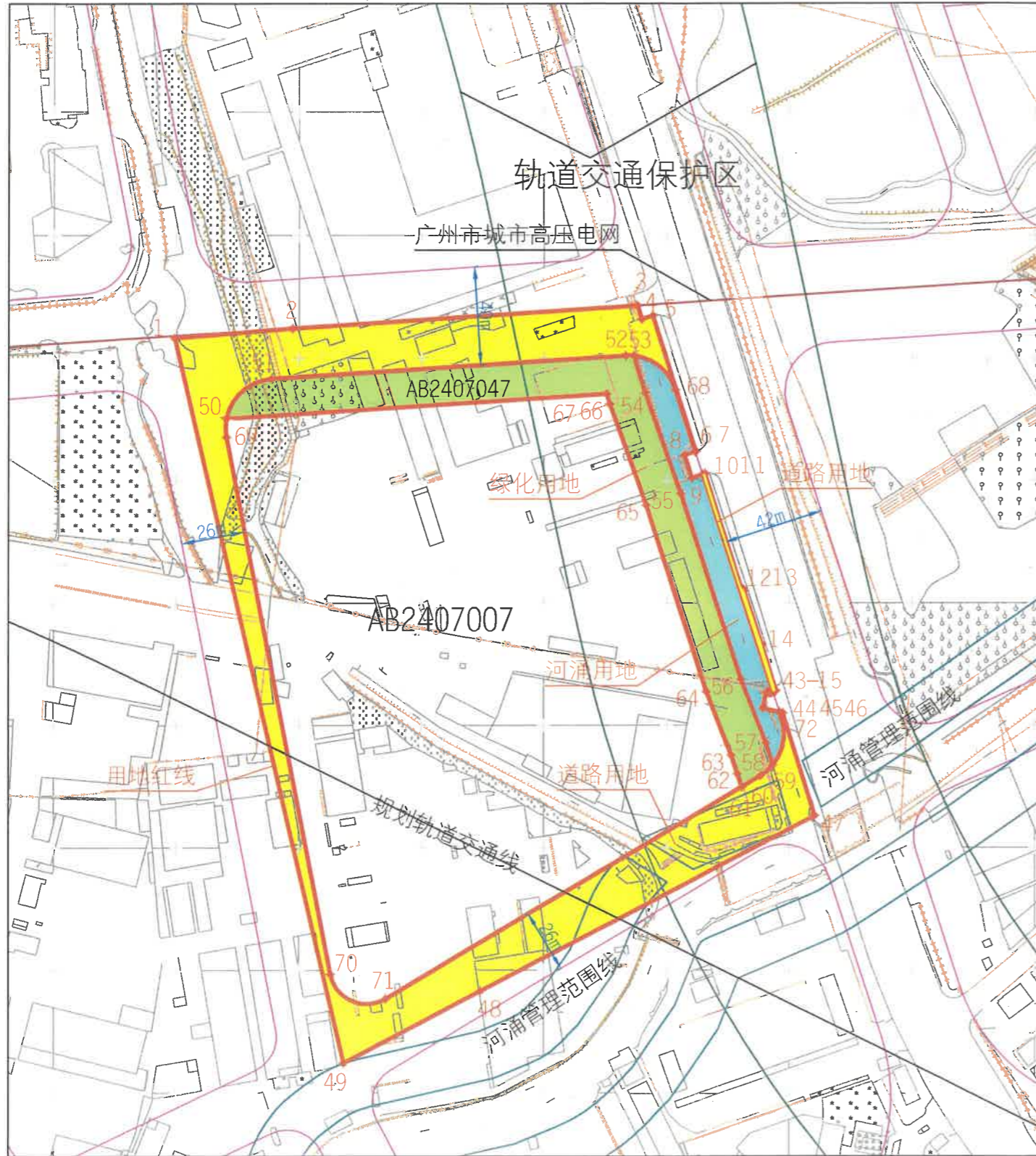


建设用地规划红线图



地上桩点表 (共 72 个桩点)					广州2000坐标系			2000国家坐标系					
广州2000坐标系		2000国家坐标系		序号	X坐标(米)	Y坐标(米)	序号	X坐标(米)	Y坐标(米)				
1	239508.250	32849.370	1	2569343.287	419512.160	49	239212.285	32918.221	49	2569046.968	419579.579		
2	239512.205	32897.382	2	2569347.010	419560.195	50	239475.523	32870.356	50	2569310.457	419532.969		
3	239521.524	33037.727	3	2569355.648	419700.595	51	239491.744	32888.710	51	2569326.590	419551.423		
4	239516.004	33039.488	4	2569350.119	419702.329	52	239501.094	33032.964	52	2569335.240	419695.732		
5	239517.459	33044.027	5	2569351.552	419706.875	53	239501.044	33036.176	53	2569335.174	419698.944		
6	239462.053	33061.706	6	2569296.056	419724.287	54	239486.125	33040.798	54	2569320.231	419703.493		
7	239461.990	33061.495	7	2569295.994	419724.075	55	239444.959	33055.572	55	2569278.991	419718.069		
8	239460.649	33057.024	8	2569294.675	419719.598	56	239369.008	33090.133	56	2569202.915	419742.263		
9	239451.215	33060.035	9	2569285.226	419722.563	57	239342.971	33090.445	57	2569176.827	419752.450		
10	239452.642	33064.527	10	2569286.630	419727.062	58	239334.911	33093.026	58	2569168.754	419754.991		
11	239452.946	33065.486	11	2569286.930	419728.023	59	239333.907	33093.359	59	2569167.747	419755.319		
12	239406.551	33080.259	12	2569240.450	419742.571	60	239329.414	33088.133	60	2569163.280	419750.072		
13	239405.152	33081.469	13	2569239.055	419743.775	61	239324.895	33080.543	61	2569158.797	419742.459		
14	239383.039	33088.810	14	2569216.905	419751.009	62	239330.266	33078.763	62	2569164.177	419740.705		
15	239364.278	33094.594	15	2569198.115	419756.702	63	239337.917	33076.314	63	2569171.841	419738.292		
16	239364.195	33094.469	16	2569198.032	419755.577	64	239363.933	33066.009	64	2569197.908	419728.114		
17	239364.117	33094.341	17	2569197.955	419756.448	65	239440.116	33041.373	65	2569274.217	419703.846		
18	239364.042	33094.210	18	2569197.881	419756.317	66	239481.369	33026.567	66	2569315.544	419689.239		
19	239363.971	33094.078	19	2569197.810	419756.184	67	239485.564	33025.268	67	2569319.746	419687.960		
20	239363.905	33093.943	20	2569197.745	419756.049	68	239487.307	33053.281	68	2569321.353	419715.984		
21	239363.842	33093.807	21	2569197.682	419755.913	69	239467.987	32870.368	69	2569302.919	419532.964		
22	239363.784	33093.668	22	2569197.625	419755.774	70	239248.435	32912.855	70	2569083.146	419574.388		
23	239363.730	33093.528	23	2569197.572	419755.633	71	239238.396	32935.255	71	2569072.998	419596.741		
24	239363.680	33093.387	24	2569197.523	419755.492	72	239352.770	33096.926	72	2569186.595	419758.978		
25	239363.635	33093.243	25	2569197.478	419755.348	地上弧段表 (共 7 个弧段)			地上弧段表 (共 7 个弧段)				
26	239363.593	33093.099	26	2569197.437	419755.204	端点	中点	半径(米)	端点	中点	半径(米)		
27	239363.557	33092.953	27	2569197.402	419755.057	X坐标(米)	Y坐标(米)		X坐标(米)	Y坐标(米)			
28	239363.524	33092.807	28	2569197.369	419754.911	53.68	239496.730	33046.780	20.00	53.68	2569330.808	419709.528	20.00
29	239363.497	33092.659	29	2569197.343	419754.763	72.59	239342.882	33097.554	20.00	72.59	2569176.703	419759.558	20.00
30	239363.473	33092.511	30	2569197.320	419754.615	59.60	239331.433	33090.941	20.00	59.60	2569165.286	419752.889	20.00
31	239363.454	33092.362	31	2569197.302	419754.466	50.51	239486.272	32876.759	20.00	50.51	2569321.675	419539.447	20.00
32	239363.440	33092.212	32	2569197.288	419754.316	52.53	239501.134	33034.571	20.00	52.53	2569335.271	419697.339	20.00
33	239363.430	33092.062	33	2569197.279	419754.166	50.69	239471.754	32870.004	20.00	50.69	2569306.689	419532.618	20.00
34	239363.425	33091.912	34	2569197.275	419754.016	70.71	239237.596	32921.447	15.00	70.71	2569072.265	419582.928	15.00
35	239363.424	33091.762	35	2569197.274	419753.866	地上面积表 (以广州2000坐标系数据计算)							
36	239363.428	33091.612	36	2569197.279	419753.716	用地面积	52532.557 平方米						
37	239363.437	33091.462	37	2569197.289	419753.566	河涌用地面积	1747.802 平方米						
38	239363.450	33091.312	38	2569197.303	419753.416	城市绿地面积	4950.309 平方米						
39	239363.468	33091.163	39	2569197.321	419753.267	道路用地面积	10506.322 平方米						
40	239363.490	33091.015	40	2569197.344	419753.119	净面积	35328.124 平方米						
41	239363.517	33090.867	41	2569197.372	419752.971	收案号	穗规资预[2023]367号						
42	239363.548	33090.720	42	2569197.403	419752.824	发文、发证编号	穗规资预[2023]367号						
43	239363.584	33090.574	43	2569197.440	419752.678	核发单位	广州市规划和自然资源局						
44	239357.040	33089.168	44	2569190.903	419751.240	核发日期	2023年10月13日						
45	239355.433	33096.062	45	2569189.262	419758.127								
46	239355.118	33097.415	46	2569188.940	419759.479								
47	239313.162	33110.335	47	2569146.919	419772.196								
48	239241.603	32974.056	48	2569076.017	419635.560								

附注：本图采用广州2000平面坐标系统和高程系统；图中界桩坐标表之2000国家坐标系数据供国土等部门参考使用。

